

TELEP2



Instruction Manual Series: TELEP2

⚠ ATTENTIONS

Read the instruction carefully before installation, non-observance of this instruction may cause damage to the fixture or hurt to human body. The installation must be carried out by a qualified electrician in accordance with local or national codes.
Cut off the power supply before installation and maintenance !

Regularly check the light source, the LED power supply, the cord and other accessories.
If any part is damaged, the product should not be used.

Keep this instruction manual handy for future use.

The light source of these products are non-changeable light diodes(LED).
Do not disassemble the product, as the light diode can cause damage to the eyes.

Use only in indoor, dry location. Clean the product with a dry cloth.

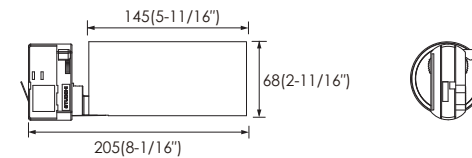
For USA market, specific Track model is required.

Manufacturer's Name Series Number of The Track: Dong Guan Tian Sheng Optic-tronics Corp.

POWERGEAR PRO-0410/PRO-0420

The luminaire shall be mounted out of arm's reach. The recommended installation height shall be at least 2,5 meter (above the ground).

Dimensions: (inch/mm)



Model	Rated input	Power	Length	ta
TELEP2-R1-220V	220-240VAC(EU)	20W	205mm (8-1/16")	-20°C ~ 35°C (-4 ~ 95°F)
	120VAC(NA)			

Tools



Electrical Safety
Gloves



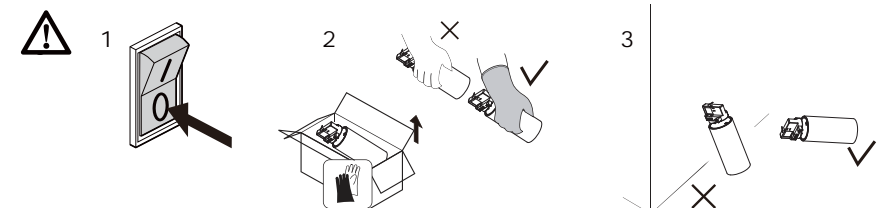
Clean cloth



Cleaning liquid
(50% ethanol)



Ø 60 mm
Rubber plug



Installation(EU)

1

Track layout should refer to the track installation manual.

Power knob
Factory setting position

2

Insert the track light into the track groove. Keep the rib of the adapter with the same level of track surface.

L1
N
L2
L3

3

Turn the power knob anti-clockwise to lock the track.

Power knob

4

Three different circuit L1,L2,L3 can be chosen by wheel

L1 L2 L3

L1 circuit works L2 circuit works L3 circuit works

90°

5 ⓘ Luminaire angle adjustment.

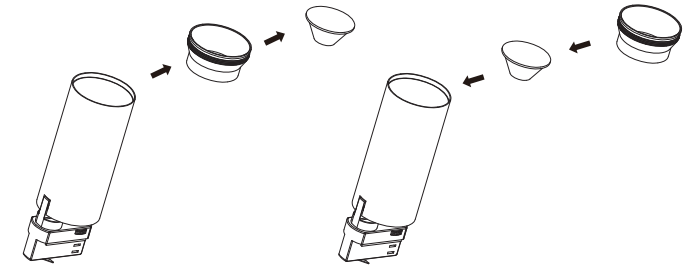
1 2

340° 90°

Feature:

Replace lens according to your desired beam angle.

The reflector rotates out counterclockwise first, and then replace the lens



NOTE: The operation should be done only by a qualified electrician.